



TEST CF-Item-One-Barcode-Sign

Page 1
Date 17-Aug-2004
Time 12:39:28 PM
Login Name John Manfredi



CF/RAI/USAA/DB01/HS/2004-00212

Expanded Number **CF/RAI/USAA/DB01/HS/2004-00212**

External ID

Title

Day Care Centres in the Socialist Republic of Vietnam. A report to UNICEF on a UNESCO staff mission to the Socialist Republic of Vietnam 7 - 21 August 1976. Photographs are in part 4. [Part 3 of 4]

Date Created
17-Aug-2004 at 11:45 AM

Date Registered
17-Aug-2004 at 11:46 AM

Date Closed

Primary Contact

Owner Location

Home Location

Current Location/Assignee

Record & Archive Manage Related Functions=80669443

CF/RAF/ZW/P0265-1981-539039836 (In Container)

Record & Archive Manage Related Functions=80669443 since 17-Au

F12: Status Certain?

No

F13: Record Copy?

No

d01: In, Out, Internal Rec or Rec Copy

Contained Records

Container

CF/RA/BX/N9/PD/F/RG/1981/T025: Asia Programme Registry Vietnam

Number 3

Field 1

Field 2

Full Classification Number

Date Published

d3: Doc Type - Forma

1:Data First Publish:

Priority

Record Type **A02 HIST CORR ITEM**

Source Document

Document Details **Record has no document attached.**

Alt Bar code = RAMP-TRIM Record Number: **CF/RAI/USAA/DB01/HS/2004-00212**

Notes

[Empty box for notes]

Print Name of Person Submit Image

Signature of Person Submit

Number of images without cover

JOHN MANFREDI

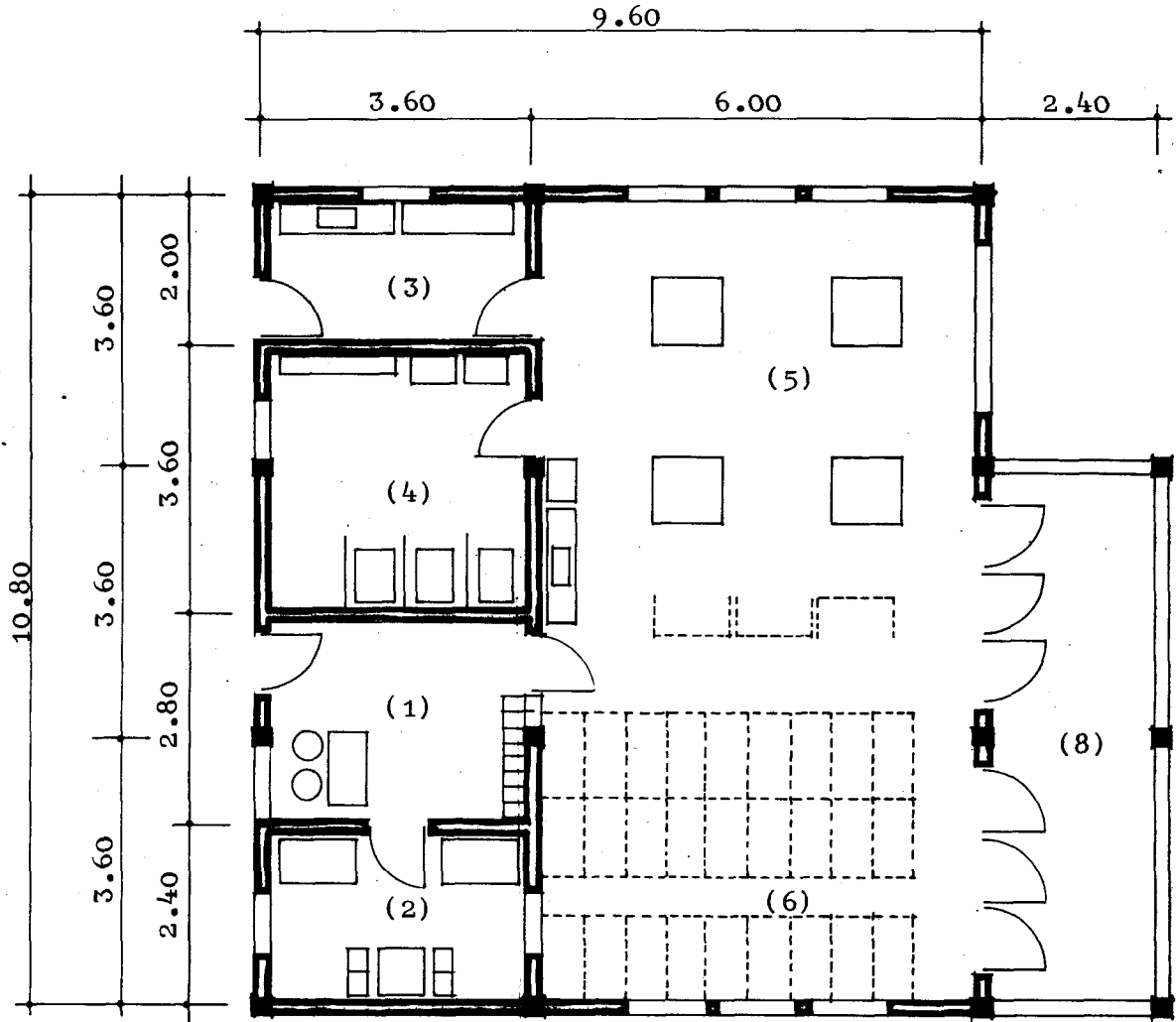
John Manfredi

[Empty box for number of images]

DRAWING No 16
Day-Care Centre for 270 children
Alternative proposal No. 2
STANDARD UNIT FOR 25 CHILDREN



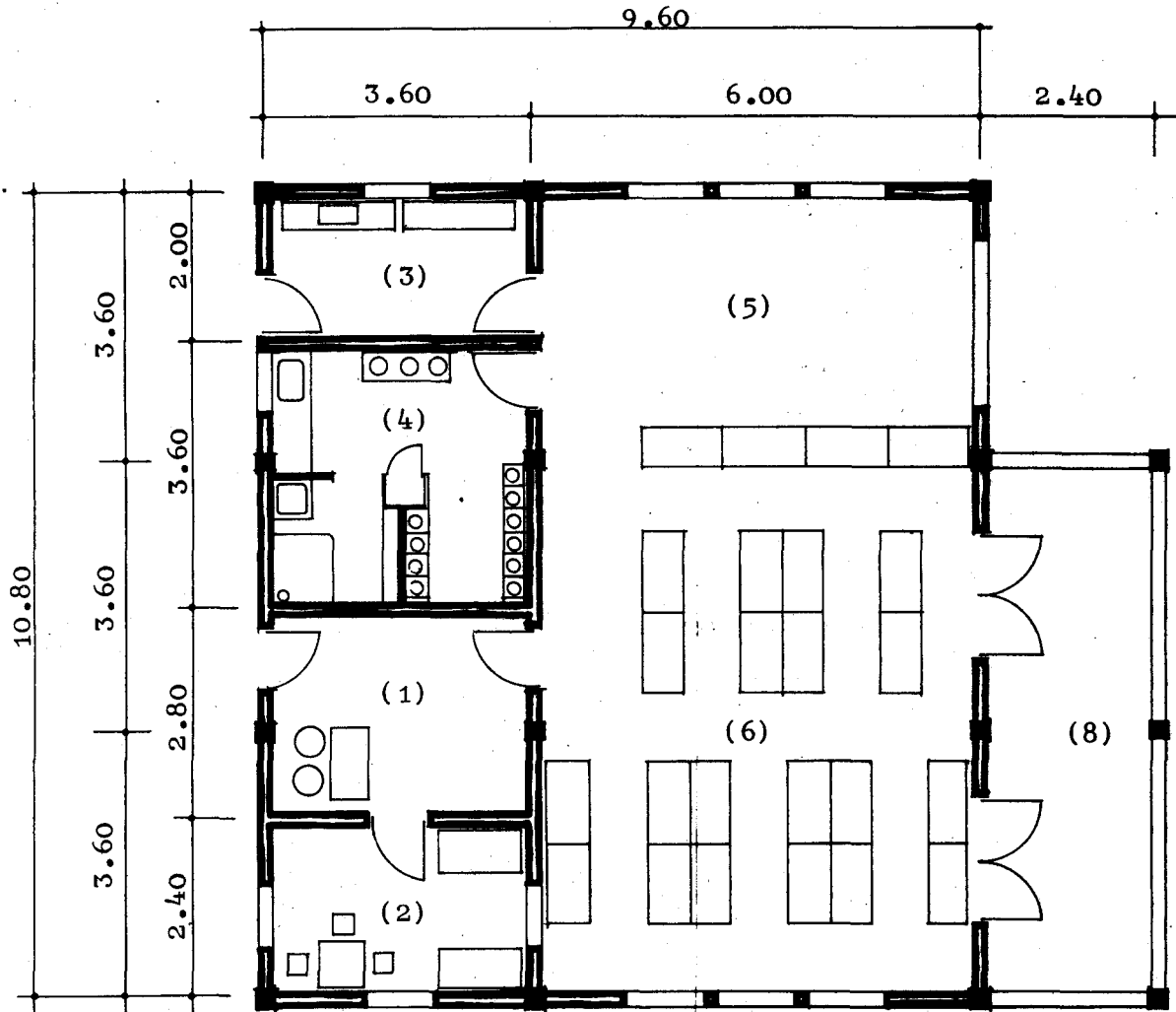
Scale: 1/100



	m ²	m ² (Vietnam. standards)	
1) Reception room	10.08	12 to 16	
2) Isolation room (undisposed children)	8.64	6 to 8	
3) Distribution of food	7.20	6 to 8	
4) Toilets	12.96	18 to 24	
5) Play and eating room	34.80	36 to 48	} 64 to 84
6) Bedroom	30.00	28 to 36	
7) Storage (beds)	-	-	
<hr/>			
8) Verandah	105.68	106 to 140	
	17.28	18 to 24	
<hr/>			
	120.96	124 to 164	

DRAWING No 17
Day-Care Centre for 270 children
Alternative proposal No. 2A
STANDARD UNIT FOR 20 BABIES

Scale: 1/100

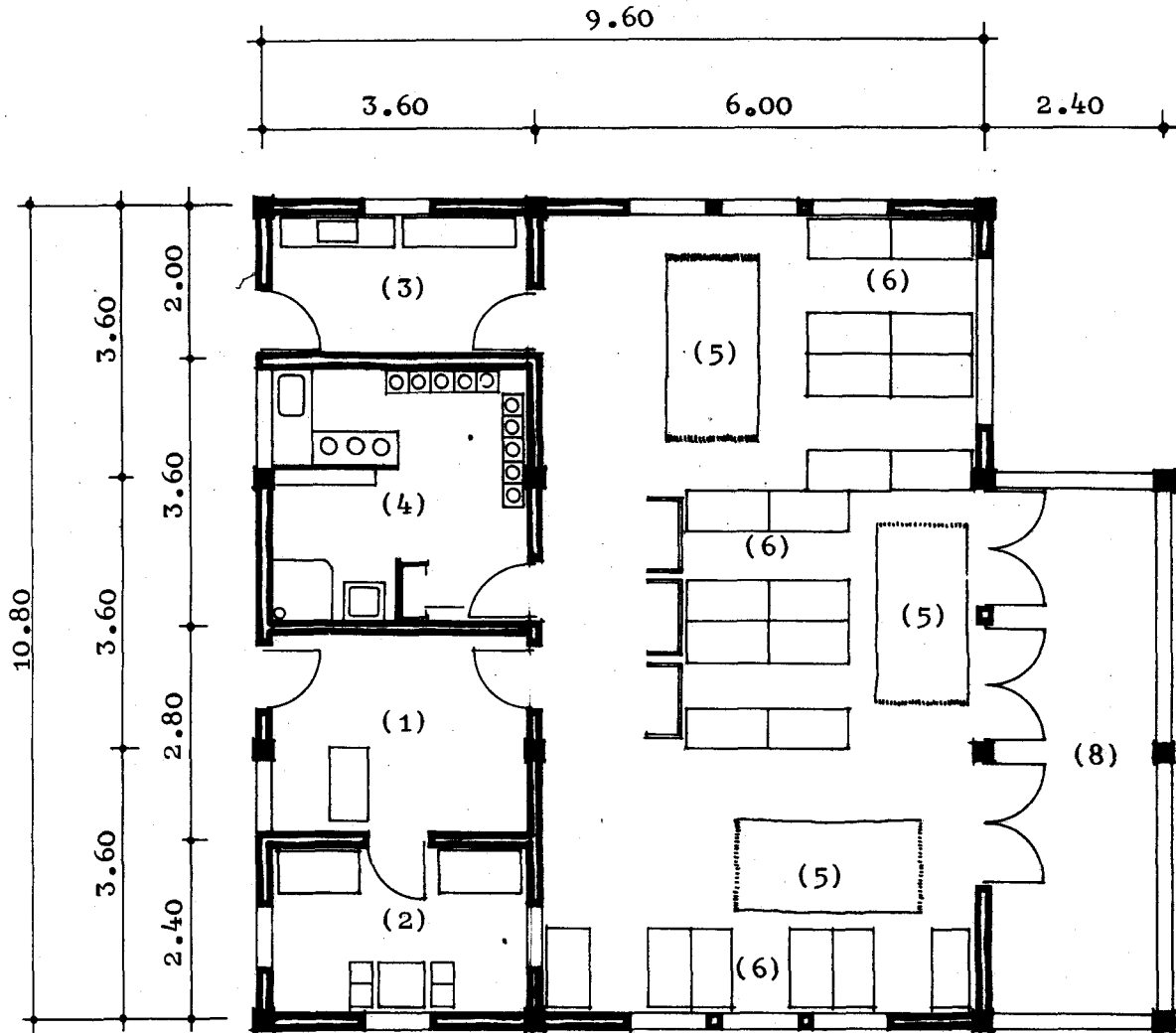


	m ²	m ² (Vietnam. standards)
1) Reception room	10.08	12 to 16
2) Isolation room (undisposed children)	8.64	6 to 8
3) Distribution of food	7.20	6 to 8
4) Toilets	12.96	18 to 24
5) Play and eating room	21.60	36 to 48
6) Bedroom	43.20	28 to 36
7) Storage (beds)	-	-
	103.68	106 to 140
8) Verandah	17.28	18 to 24
	120.96	124 to 164

DRAWING No 18
Day-Care Centre for 270 children
Alternative proposal No 2B
STANDARD UNIT FOR 20 BABIES



Scale: 1/100



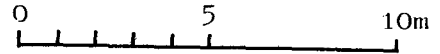
	m ²	m ² (Vietn. standards)
1) Reception room	10.08	12 to 16
2) Isolation room (undisposed children)	8.64	6 to 8
3) Distribution of food	7.20	6 to 8
4) Toilets	12.96	18 to 24
5) Play and eating room	64.80	36 to 48
6) Bedroom		28 to 36
7) Storage (beds)	-	-
	103.68	106 to 140
8) Verandah	17.28	18 to 24
	120.96	124 to 164

ANNEX 7

Immediate improvements
to be incorporated into
the present phase of
the project.

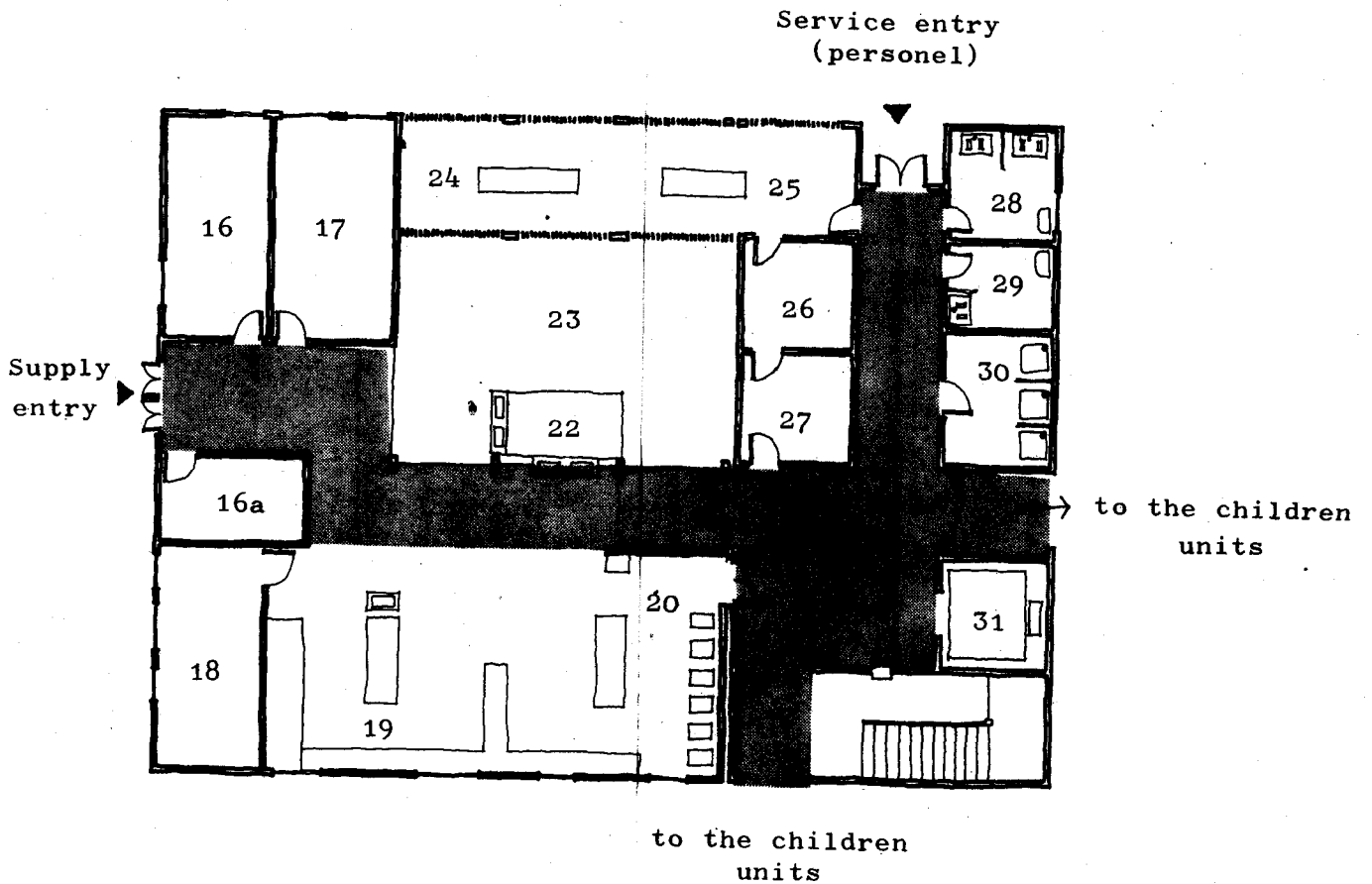
DRAWING No 19
Day-Care Centre for 270 children
Immediate improvement of the
Kitchen and laundry wing
Ground floor (partial)

Scale: 1/200



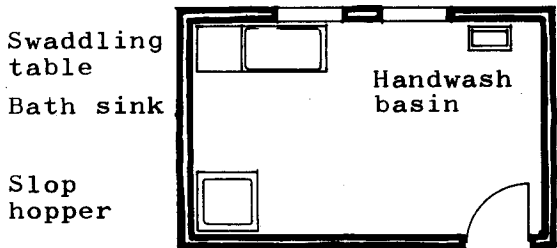
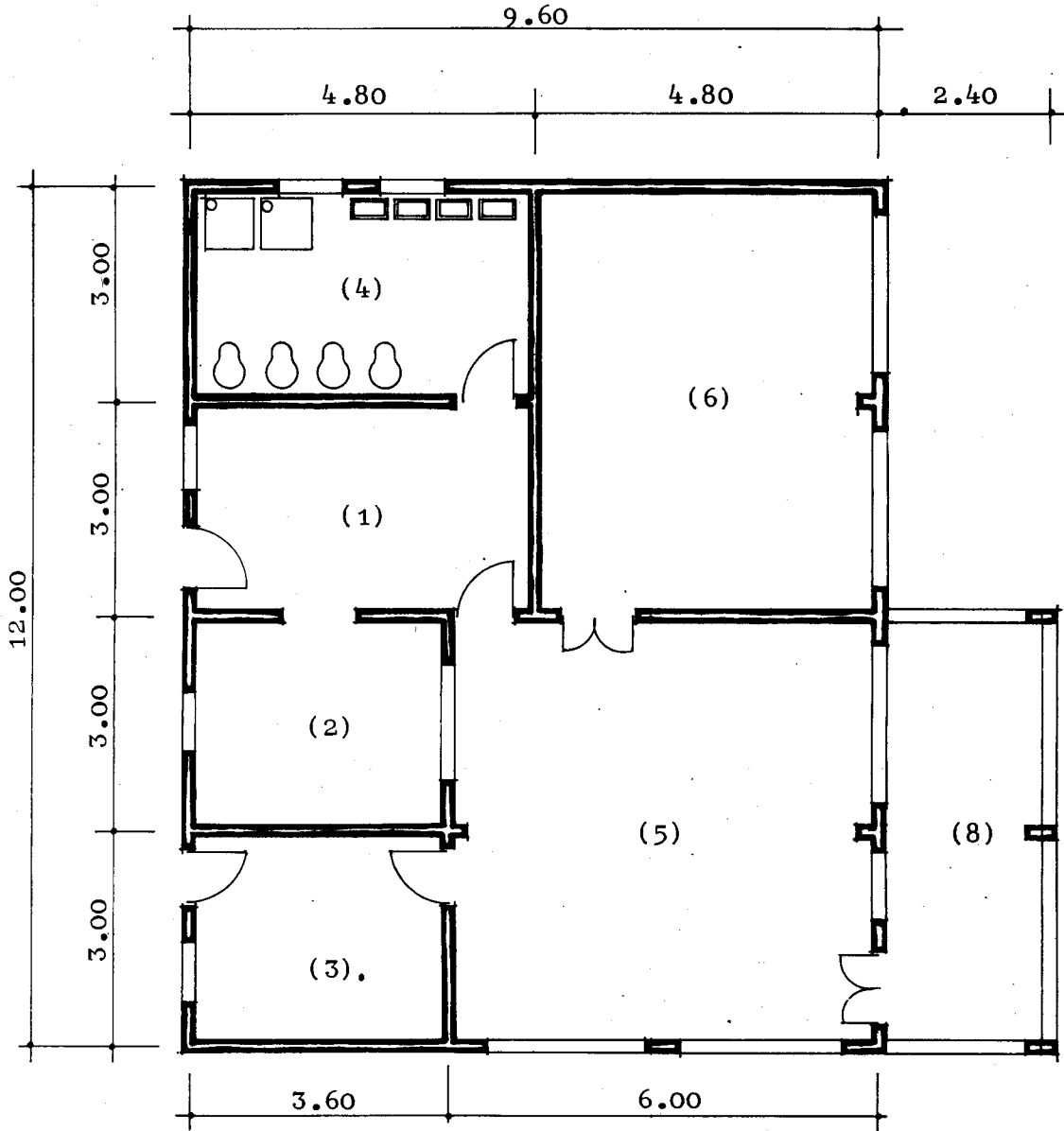
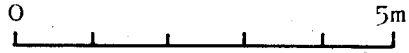
Legend

- | | |
|-------------------------------------------------|------------------------|
| 16 Dry food store | 24 Laundry |
| 16a Available for store (or garbage) | 25 Drying |
| 17 Fresh food (vegetables) store | 26 Mending, ironing |
| 18 Coal store | 27 Linen store |
| 19 Kitchen | 28 Women's toilets (2) |
| 20 Distribution of food (central) | 29 Men's toilet (1) |
| 21 - | 30 Showers |
| 22 Water tank | 31 Food hoist |
| 23 Open courtyard (washing of vegetables, etc.) | |



DRAWING No 20
Day-Care Centre for 270 children
Immediate improvement to the
STANDARD UNIT FOR 25 CHILDREN

Scale: 1/100



Toilets for babies 8-24 months

	m ²
1) Reception room	14.40
2) Isolation room (undisposed children)	10.80
3) Distribution of food	10.80
4) Toilets	14.40
5) Play and eating room	36.00
6) Bedroom	28.80
7) Storage (beds)	-
	64.80
8) Verandah	14.40
	115.20
	129.60

ANNEX 8

Examples of day care
centres in Hungary .

Examples of day care centres in Hungary

The information on day care centres in Hungary and in some socialist countries given below are taken from an article published by Edith Perne and Erzsébet Galamb in "Santé publique. Revue internationale" (vol. 13, No. 1, 1970) under the title "Les plans de constructions de crèches en Hongrie et dans quelques pays socialistes".

It provides an interesting comparison with the Vietnamese examples.

General

The day care centre is defined as a medical institution whose purpose is to provide educational and health care services to children from 1.5 to 3 years. It should create an environment for the children similar to that at home.

The day care centre should be located near to the children's home in order not to create transportation problems: the optimum distance is 500 m, the maximum 800 m.

The size of the centres vary according to local needs. In Hungary, standard plans has been established for enrolments of 20, 40, 60, 80, 100 and 120 children, based on a standard "care unit" for 20 children.

The "care unit"

The "care unit" is the number of children two nurses can take care of in one team, which has been defined in Hungary as a group of 20 children. These 20 children are subdivided into two groups of 10, as it is considered that with 10 children, each nurse can have a personal contact with each child and carry out educational activities in a more satisfactory way.

Each group of ten has at its disposal a room of 40 m² which is used alternatively for playing, eating and resting, in contrast with the system often provided in other countries where provision is made for separate play room and bed room.

Even though the fact the nurse has to re-arrange the room several times a day makes for additional work, it is considered that this disadvantage is more than compensated by the fact that it is easier to stimulate the interest of a small group of ten children and because it is thus possible to provide a large room to serve both activities.

Examples of the standard building units which have been developed to house the activities of a group of 20 children are shown below in drawings No. 21 (type A for 20 children), No. 22 (type A for 20 babies) and No. 24 (type B for 20 children).

Unit type B is more economical (180 m² incl. terrace) than type A (201 m² incl. terrace), but both have 2 rooms of the same size (2 x 40 m²) and are organised according to the same principles:

- direct entrance from the street into a lobby which is used as a push-cart store and which give access to the reception room, to the toilets for the mothers to the isolation room and to one of the two children rooms;
- the reception room is linked with the bathroom which gives access to both children's rooms, the children being received in their room only after a bath or at least after they have washed their hands;
- the bathroom is also linked with the service corridor for the disposal of the dirty sheets;
- one of the two children's rooms is linked with the service corridor for the distribution of food which comes direct from the kitchen;
- the two children's rooms can be linked together when necessary so that to enlarge the space for certain activities (gymnastics) and both have direct access to the terrace.

Examples of day care centres

Two plans of day care centres are given below: one for 80 children based on the unit type A (see drawing No. 23) and one for 100 children based on the unit type B (see drawing No. 25). Both are single storey buildings. The total floor area per child (incl. terraces, central services, circulation space etc ...) is 16.28 m² in the first case, and 12.37 m² in the second. It will be noted from the space analysis (see below) that the circulation space is rather low in both cases (14.75% and 12.93%).

From a comparison with space standards of other socialist countries, it appears that Polish, Czech and Bulgarian standards are comparable with the Hungarian model type B. West Germany have higher standards (approximately 20 m² per child). Generally speaking, the area m²/child is decreasing when the enrolment increases (approximately from 14 m² for centres of 20 children down to 12 m² for centres of 120 children).

Comparison with the Vietnamese model

Comparison concerning the total floor area (incl. verandahs, circulation space etc.) expressed in m²/child is as follows:

	VIETNAM (270 children) (unit groups of 25-30)			HUNGARY (unit group of 20)	
	Origin. Vietnam. proposal	Alternative proposal 1	Alternative proposal 2	80 children type A	100 children type B
	Drawing 3,4	Drawing 8,9	Drawing 14,15	Drawing 23	Drawing 25
A-Children units	5.44	5.06	4.86	10.05	8.84
B-Admin. & infirmary	0.40	0.40	0.40	1.35	0.85
C-Kitchen & laundry	0.91	0.75	0.73	1.80	1.08
D-Common rooms	0.65	0.47	0.43	-	-
E-Central services	-	-	-	0.68	-
Circulation Space	3.08 (29.4%)	2.52 (27.4%)	2.21 (25.6%)	2.40 (14.7%)	1.60 (12.9%)
TOTAL m ² /child	10.48	9.20	8.63	16.28	12.37

Four major comments can be made:

- 1) The total floor area per child is higher in the case of the Hungarian day care centres even though they do not provide the common rooms as do the Vietnamese.
- 2) On the reverse, the Hungarian centres are more economical in terms of circulation space than the original Vietnamese proposal; however, it must be noted that the difference is very reduced with alternative proposal No. 2, and it would be still less if the width of the corridors were reduced to 1.5 m as it is the case of the Hungarian model.
- 3) The Hungarian model offers 9 to 10 m² for the children units to be compared with 5 m² in the Vietnamese case. In this regard a more detailed analysis of the basic unit shows that the difference is distributed as in the table below:

	VIETNAM Children unit for 25 children Altern. prop. 1	HUNGARY Children unit for 20 children type B
	m ² /child	m ² /child
Entrance and push-cart st.	-	0.79
Reception room	0.52	0.90
Isolation room	0.35	0.35
Toilets for the mothers	-	0.13
Bath and swaddling (and toilets)	0.51	1.01
Distribution of food	0.35	-
Playrooms - bedrooms	2.88	4.02
SUB-TOTAL	4.61	7.20
Verandah	<u>0.58</u>	<u>1.80</u>
TOTAL	5.19	9.00

This comparison of areas/m² per child makes the Vietnamese proposal appear quite modest and one may well question the Hungarian space standards. The area per child of 16.28 m² exceeds the area per place of the majority of second level schools and the area per place of 4.02 m² for the play room alone exceeds that of the area per place of practically all primary schools in the Region.

None the less, the Hungarian example demonstrates that the common sleeping/playroom which the mission advocated is a practical proposition and the concept of direct distribution of food from the main kitchen to the play room is worth examining. In the Vietnamese proposal each unit is provided with a small kitchen in which the food delivered in bulk from the main kitchen is served to the children and where the children's cups and bowls are washed and stored. This small kitchen is useful and practical but it led the mission to question the need for such a large central kitchen as indicated in the Vietnamese proposal.

- 4) The Hungarian centres are all one storey buildings, but from examples given in the article presented above, they do not seem to exceed enrolments of 120 children. To what extent would it be possible to develop one storey layouts for enrolments of 270 children without functional inconvenience is a problem which remains open (see above para. 3.4.2)

New trends

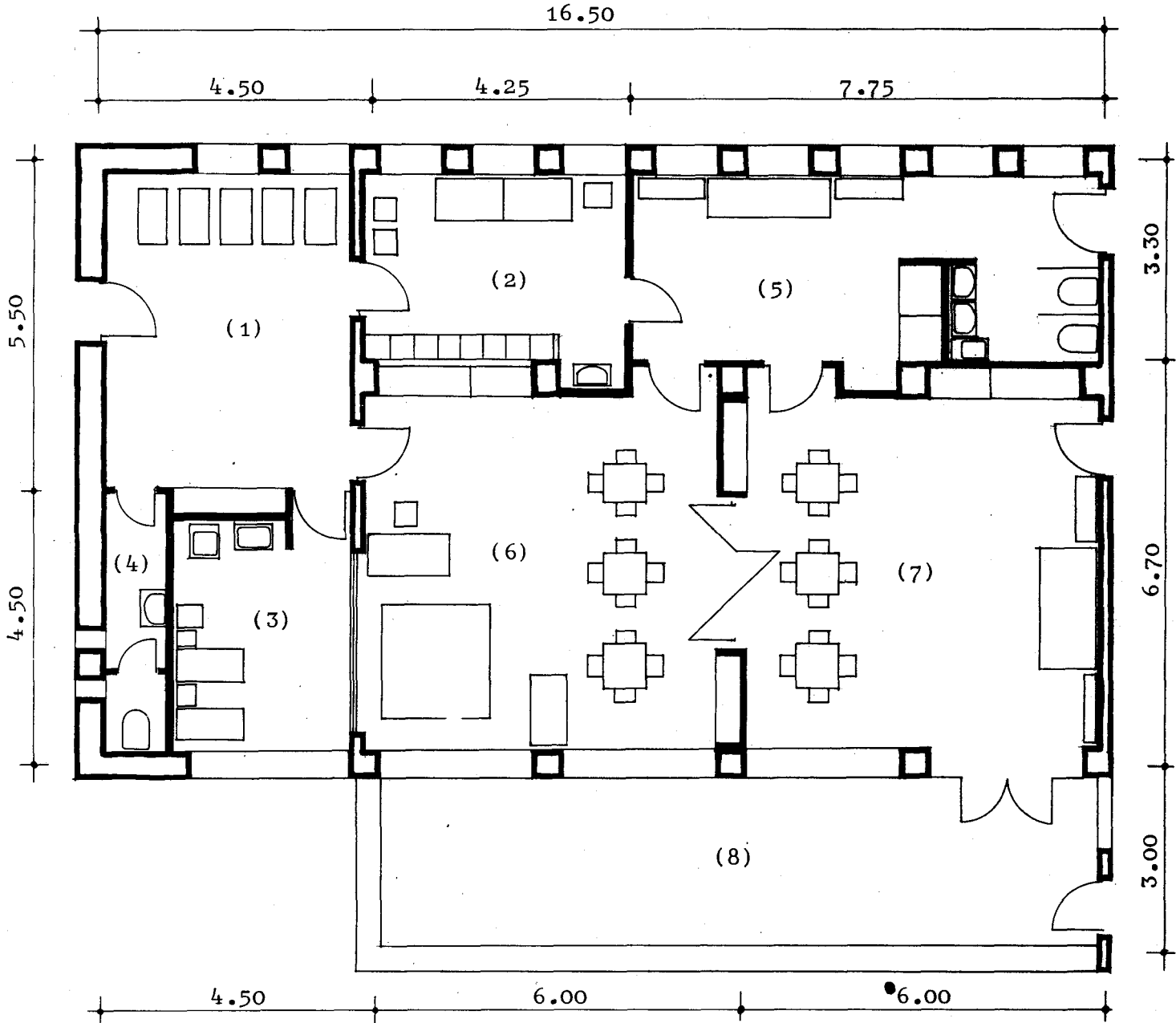
In Hungary, for many years, the day care centres and kindergardens have been built separately. Around 1958 following the construction of industrial plants, the need for linking the two institutions arose. It seems that the tendency is to link both institutions in the same building, and to pool the central services (kitchen and laundry), but maintaining a clear organisational separation between the two sections.

To some extent, the particularities of the new Vietnamese model including age groups from 2 to 72 months reflects the same trend (see above para. 3.3.2).

DRAWING No 21

Hungarian Day-Care Centres
STANDARD UNIT Type A
ARRANGEMENT FOR 20 CHILDREN

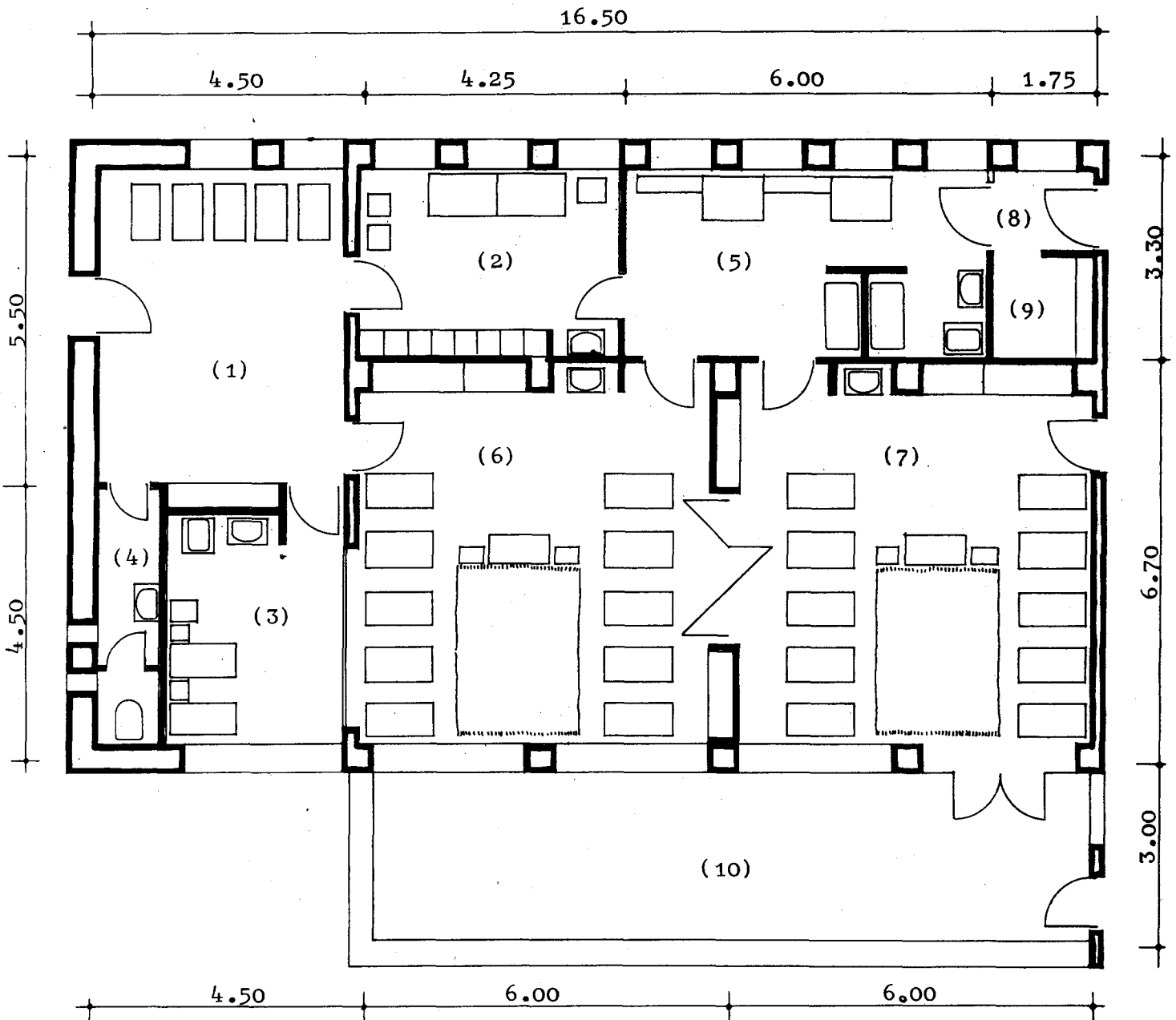
Scale: 1/100



	m ²	m ² /child
1) Entrance and push-carts store	24.75	1.24
2) Reception room	14.00	0.70
3) Isolation room	14.40	0.72
4) Toilets for the mothers	5.85	0.29
5) Bath and swaddling	25.60	1.28
6)-7) Playroom/Bedroom for 10 children each	80.40	4.02
<hr/>		
8) Terrace	165.00	8.25
	36.00	1.80
	201.00	10.05

DRAWING No 22
Hungarian Day-Care Centres
STANDARD UNIT Type A
ARRANGEMENT FOR 20 BABIES

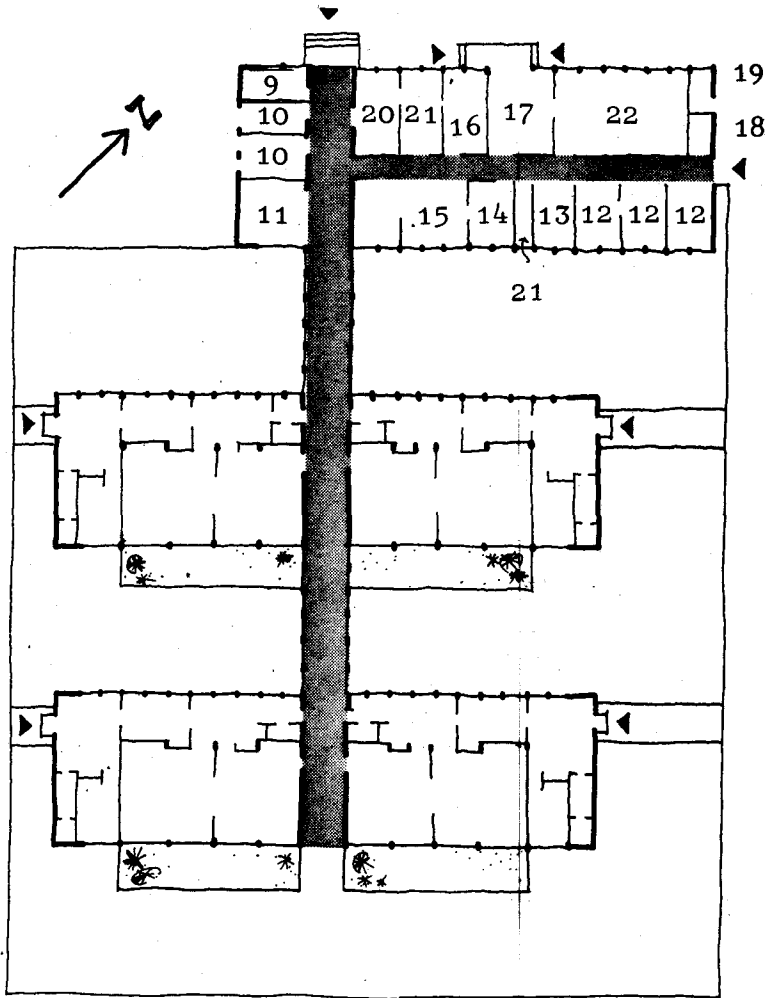
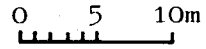
Scale: 1/100



	m ²	m ² /child
1) Entrance and push-carts store	24.75	1.24
2) Reception room	14.00	0.70
3) Isolation room	14.40	0.72
4) Toilets for the mothers	5.85	0.29
5) Bath and swaddling of sucklings	19.80	0.99
6)-7) Playroom/Bedroom for 10 sucklings each	80.40	4.02
8) Secondary entrance	2.65	0.13
9) Store	3.15	0.16
<hr/>		
10) Terrace	56.00	1.80
<hr/>		
	201.00	10.05

DRAWING No 23
Hungarian Day Care Centre for
80 children, based on Unit Type A

Scale: 1/500



- A) Units for 20 children each
1-8 see drawing No 21
- B) Administration and infirmary
 - 9) Doctor
 - 10) Offices
 - 11) Staff eating room
 - 12) Staff toilets, showers and cloakroom
 - 13) Staff kitchen
- C) Kitchen and laundry
 - 14) Office
 - 15) Kitchen and distribution of food
- D) Central services
 - 16) Vegetable store
 - 17) Cool store
 - 18) Potatoes store
 - 19) Garbage
 - 20) Laundry
 - 21) Drying, ironing
 - 22) Central heating

Hungarian day care centre for
80 children based on unit type A
(see drawings Nos 23 and 21)

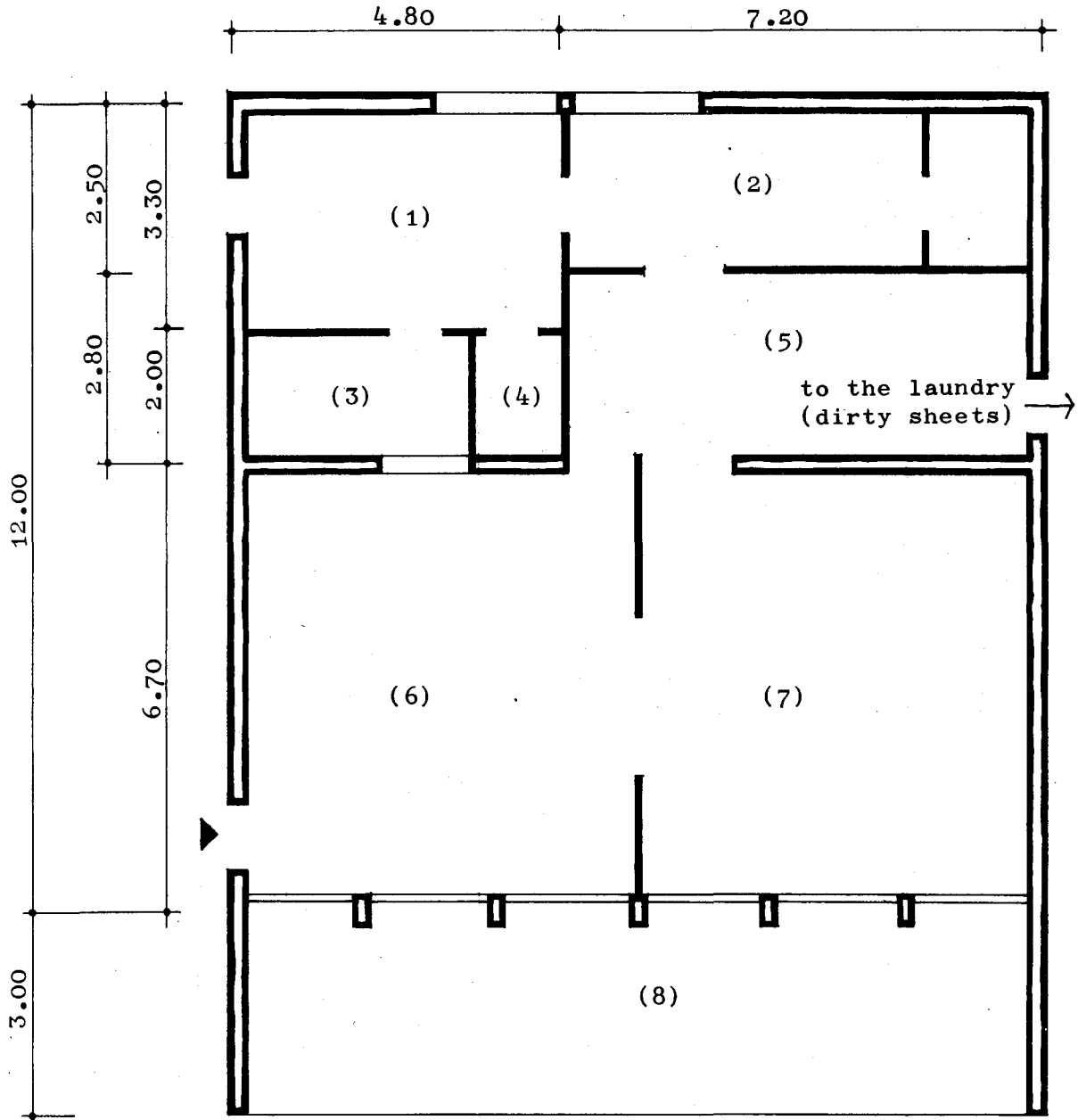
SPACE ANALYSIS

(based on 80 children)

	m ²	m ² /child	%
A - CHILDREN UNITS			
1 - Entrance and push-carts stores	99.00	1.24	7.60
2 - Reception rooms	56.00	0.70	4.30
3 - Isolation rooms	57.60	0.72	4.43
4 - Toilets for the mothers	23.40	0.29	1.80
5 - Bath and swadding	102.40	1.28	7.86
6/7 Playrooms/bedrooms	321.60	4.02	24.70
8 - Terraces	144.00	1.80	11.06
SUB-TOTAL A	804.00	10.05	61.75
B - ADMINISTRATION AND INFIRMARY			
9 - Doctor	9.00		
10- Offices	22.50		
11- Staff eating room	22.50		
12- Staff toilets, toilets and cloak rooms	40.50		
13- Staff kitchen	13.50		
SUB-TOTAL B	108.00	1.35	8.29
C - KITCHEN AND LAUNDRY			
14- Office	13.50		
15- Kitchen and distribution of food	33.75		
16- Vegetables store	18.00		
17- Coal store	27.00		
18- Potatoes store	4.50		
19- Garbages	4.50		
20- Laundry	18.00		
21- Drying, ironing	24.75		
SUB-TOTAL C	144.00	1.80	11.06
D - COMMON ROOMS			
	-	-	-
E - CENTRAL SERVICES			
22- Central heating	54.00	0.68	4.15
CIRCULATION SPACE	192.00	2.40	14.75
GRAND TOTAL (incl. terraces)	1.302.00	16.28	100.00

DRAWING No 24
Hungarian Day-Care Centres
STANDARD UNIT FOR 20 CHILDREN
Type B

Scale: 1/100

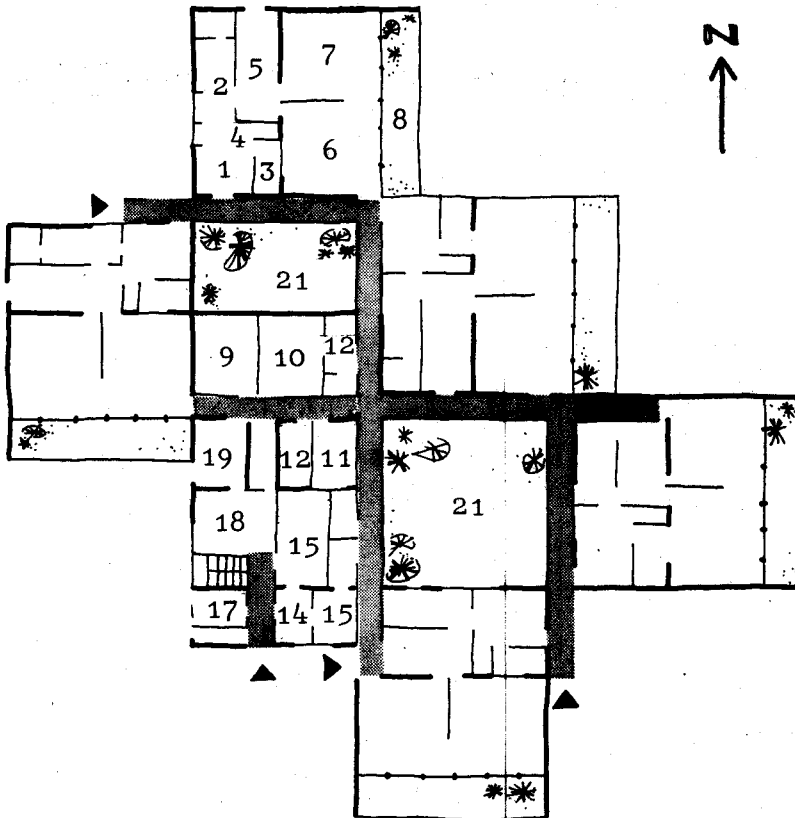


	m ²	m ² /child
1) Entrance and push-carts store	15.84	0.79
2) Reception room and store	18.00	0.90
3) Isolation room	7.00	0.35
4) Toilets for the mothers	2.60	0.13
5) Bath and swaddling	20.16	1.01
6)-7) Playroom/Bedroom for 10 children each	80.40	4.02
	144.00	7.20
8) Terrace	36.00	1.80
	180.00	9.00

DRAWING No 25
Hungarian Day-Care Centre for
100 children based on Unit Type B

Scale: 1/500

0 5 10m
└───┬───┬───┘



- A) Units for 20 children each
1-8 (see drawing No 24)
- B) Administration and infirmary
 - 9) Doctor
 - 10) Office
 - 11) Staff eating room
 - 12) Staff toilets, showers
and cloak-room
 - 13) Staff kitchen

- C) Kitchen and laundry
 - 14) Office
 - 15) Kitchen and distribution
of food
 - 16) Vegetable store (basement)
 - 17) Store and garbages
 - 18) Laundry
 - 19) Drying and ironing
 - 20) Linen store
 - 21) Open courtyard

Hungarian day care centre for
100 children based on unit type B
(see drawings Nos 25 and 24)

SPACE ANALYSIS

	m ²	m ² /child	%
A - CHILDREN UNITS			
1. Entrance and push-carts stores	79.20	0.79	6.40
2. Reception rooms (and store)	82.32	0.82	6.65
3. Isolation rooms	35.00	0.35	2.83
4. Toilets for the mothers	13.00	0.13	1.05
5. Bath and swaddling	92.48	0.93	7.47
6,7 Playrooms/bedrooms	402.00	4.02	32.48
8. Terraces	180.00	1.80	13.55
SUB-TOTAL A	884.00	8.84	71.43
B - ADMINISTRATION AND INFIRMARY			
9. Doctor	20.80		
10. Office	20.80		
11. Staff eating-room	11.25		
12. Staff toilets, showers and cloak room	24.25		
13. Staff kitchen	8.25		
SUB-TOTAL B	85.35	0.85	6.90
C - KITCHEN AND LAUNDRY			
14. Office	8.25		
15. Kitchen and distribution of food	30.00		
16. Vegetables store (basement)	18.00		
17. Store and garbages	13.20		
18. Laundry	14.00		
19. Drying, ironing	18.00		
20. Linen store	6.75		
SUB-TOTAL C	108.20	1.08	8.74
D - COMMON ROOMS	-	-	-
E - CENTRAL SERVICES	-	-	-
CIRCULATION SPACE	160.00	1.60	12.93
GRAND TOTAL (incl. terraces)	1,237.55	12.37	100.00

SELECTED REFERENCES

A) Day care and day care centres in general

André, Mme. and others. "Garderies ou écoles maternelles?" Concours Médical vol. 92, No 38, septembre 1970. pp. 6762-6770.

"Crèches : Réglementation" Actualités Sociales, Paris. vol. 36, no.2, février 1976, pp. 5-8.

Davidson, Françoise et Maguin, Paulette. Les crèches : Réalisation, fonctionnement, vie et santé de l'enfant. Préf. /par/ Françoise Davidson, Paulette Maguin /et/ Michel Soulé. Paris, Ed. ESF, /c. 1970/. 324 p.

Denner, Anne et Dana, Jacqueline. L'environnement de l'enfant. Paris, Ed. du Seuil, /c. 1973/. 191 p.

France. Caisse nationale des allocations familiales. "Réglementation des crèches". Circulaire no. DGS 782 P.M.E. 2 du 16 décembre 1975. (B.O.S.T. 75/51 du 14 au 20 décembre 1975) Union Sociale no. 250, février 1976. pp. 19-21.

La Garde des enfants de moins de trois ans". Informations Sociales, no. 10, octobre 1972. pp. 2-79.

Hermann, Alice and Komlosi, Sandor. Early child care in Hungary. 1972. 123 p.

"An institution for child care: Casa Cuna de la Plata, Argentina". Courrier centre international de l'enfance vol. 23, no. 2, mars-avril 1973. pp. 121-127.

"Le jardin d'enfants au village" Enfant en milieu tropical no. 73, 1971. pp. 28-34.

Leandri, F. et Boulay, L. Les moins de 8 ans au centre de loisirs. Paris, A. Colin, 1972. 160 p.

Lovric, M. "Le nouveau programme d'activités éducatrices dans les établissements préscolaires en Yougoslavie" Journal international de l'enfance préscolaire vol. 3, no. 1, 1971. pp. 37-38.

Marshall, R. "Une expérience au Soudan; le pédagogobloc" Perspectives no. 2, 1972. pp. 89-94.

Modes de garde des enfants de 0 à 3 ans. Cahier de recommandations. Préf. par Roland Lebel. Paris, E.S.F., /c. 1972/. 119 p. (Les milieux éducatifs de l'enfant).

Moins (Les) de quatre ans à l'école maternelle sous la dir. de Mme Brulé. Introd. de Melle Sourgen. 2nd ed. Paris, A. Colin, 1970. 240 p. (Cahiers de pédagogie moderne, no. 46)

Moussy, B. "Des jardins d'enfants au Togo et au Tchad" Carnets de l'enfance no. 21, janvier-mars 1973. pp. 63-75.

Rodhe, B. "Une école "décloisonnée" ouverte sur le monde" Perspectives no. 2, 1972. pp. 100-113.

Tatochenko, V.K. "Social action on behalf of the child - a USSR experience" Carnets de l'enfance no. 16, octobre-décembre 1971. pp. 72-86. [In no: les actions pour le jeune enfant].

Togo. Ministère de l'éducation nationale. Enseignement du premier degré (Direction). Programmes, instructions et horaires des jardins d'enfants [n.p.] Ministère de l'éducation nationale, 1974. 11 p.

Valentin, S. "Remarques sur les actions en faveur de l'enfant de 3 à 6 ans. L'exemple du Sénégal" Carnets de l'enfance no. 21 janvier-mars 1973. pp. 51-62.

Villermay, D. de "La crèche familiale : une solution moderne" Revue de l'infirmière vol. 24, no. 4 avril 1974. pp. 303-309.

Wagner, M.G. et Wagner M. "Day care for children : the European experience" Carnets de l'enfance no. 21, janvier-mars 1973. pp. 76-81.

B) Construction of day care centres

Abbadie, M. "Equipements spéciaux pour la petite enfance". Courrier centre international de l'enfance, vol. 21, no. 4, juillet-août 1971. pp. 372-377.

"Architecture scolaire et aménagement de l'espace" Notes et études documentaires no. 4147-4148-4149-4150, 31 décembre 1974. 116 p.

Davidson, F. "Equipements spéciaux pour les enfants dont les mères travaillent. In : Séminaire sur l'enfant dans la cité, C.I.E., novembre 1970, Paris" Courrier centre international de l'enfance, vol. 21, no. 4, juillet-août 1971. pp. 360-371.

Ferran, P. et Porcher, L. L'aménagement de l'espace scolaire. Paris, Delagrave, 1973. 112 p.

France. (Ministère) éducation nationale. Direction chargée des Equipements. Groupe des études techniques. Instruction relative à la construction des écoles maternelles. Paris, Institut national de recherche et de documentation pédagogiques, 1972. 71 p. (Equipement et construction - Brochure no. 211 CS)

Laing, A.F. "The construction of an infant school amenities index" British Journal of Educational Psychology vol. 41, no. 1, February 1971. pp. 94-95.

"Les équipements d'accueil de la petite enfance / Small child facilities" Rev. Franç. Aff. Soc., vol. 28, no. 2 1974. pp. 159-218.

Mesmin, Georges. L'enfant: l'architecture et l'espace. Tournai, Cesterman, 1971. 191 p.

Ontario Department of Education. Open space; general learning facilities for kindergarden primary and junior students. Toronto, 1971.

Perne, E. et Galamb, E. "Les plans de constructions de crèches en Hongrie et dans quelques pays socialistes." Santé publique, Revue internationale, vol. 13, no. 1, 1970. pp. 77-88.

Davidson, F. "Equipements spéciaux pour les enfants dont les mères travaillent. In : Séminaire sur l'enfant dans la cité, C.I.E., novembre 1970, Paris" Courrier centre international de l'enfance. vol. 21, no. 4, juillet-août 1971. pp. 360-371.